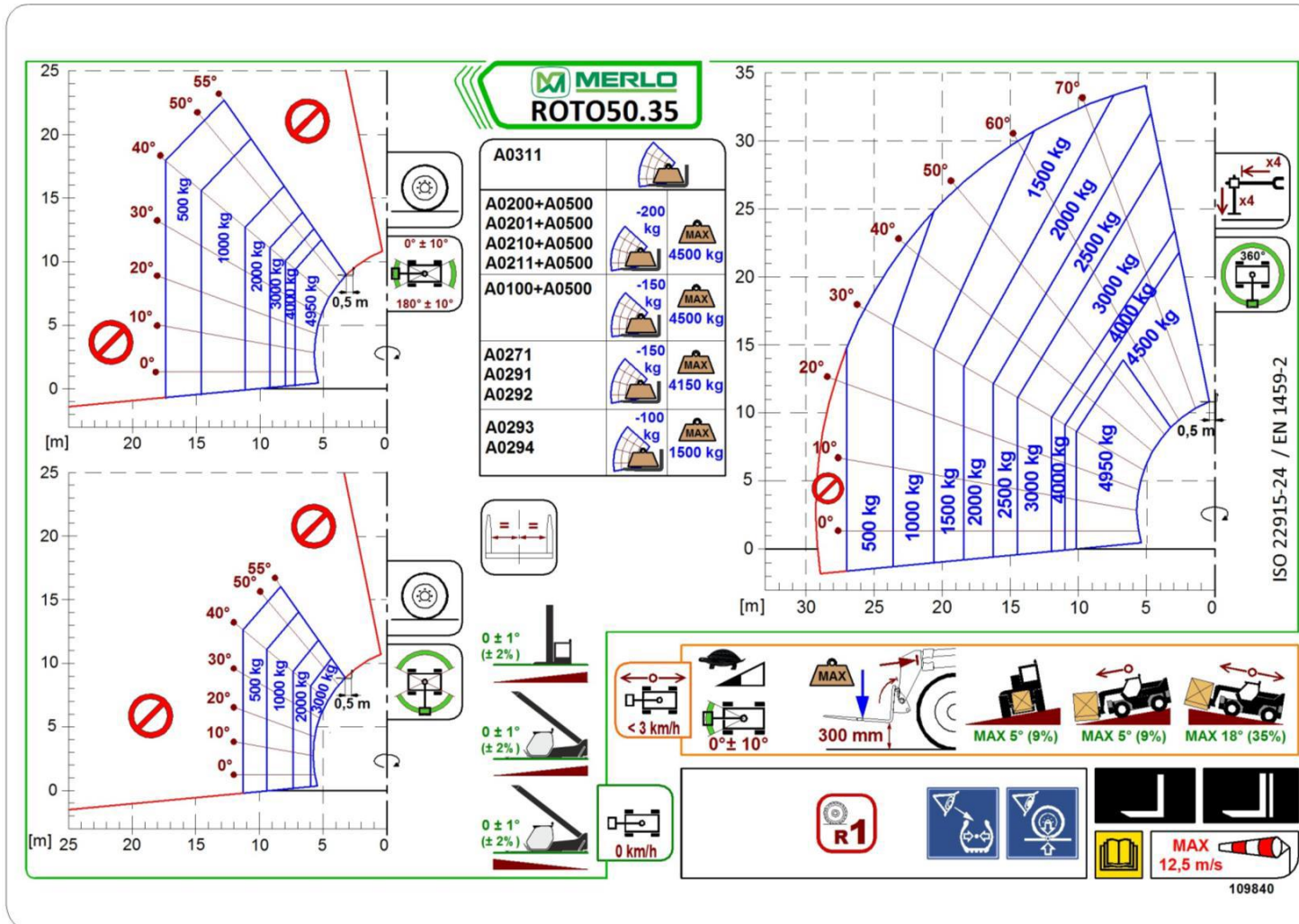




PALLETVORKEN

TABEL LINKS: OP BANDEN

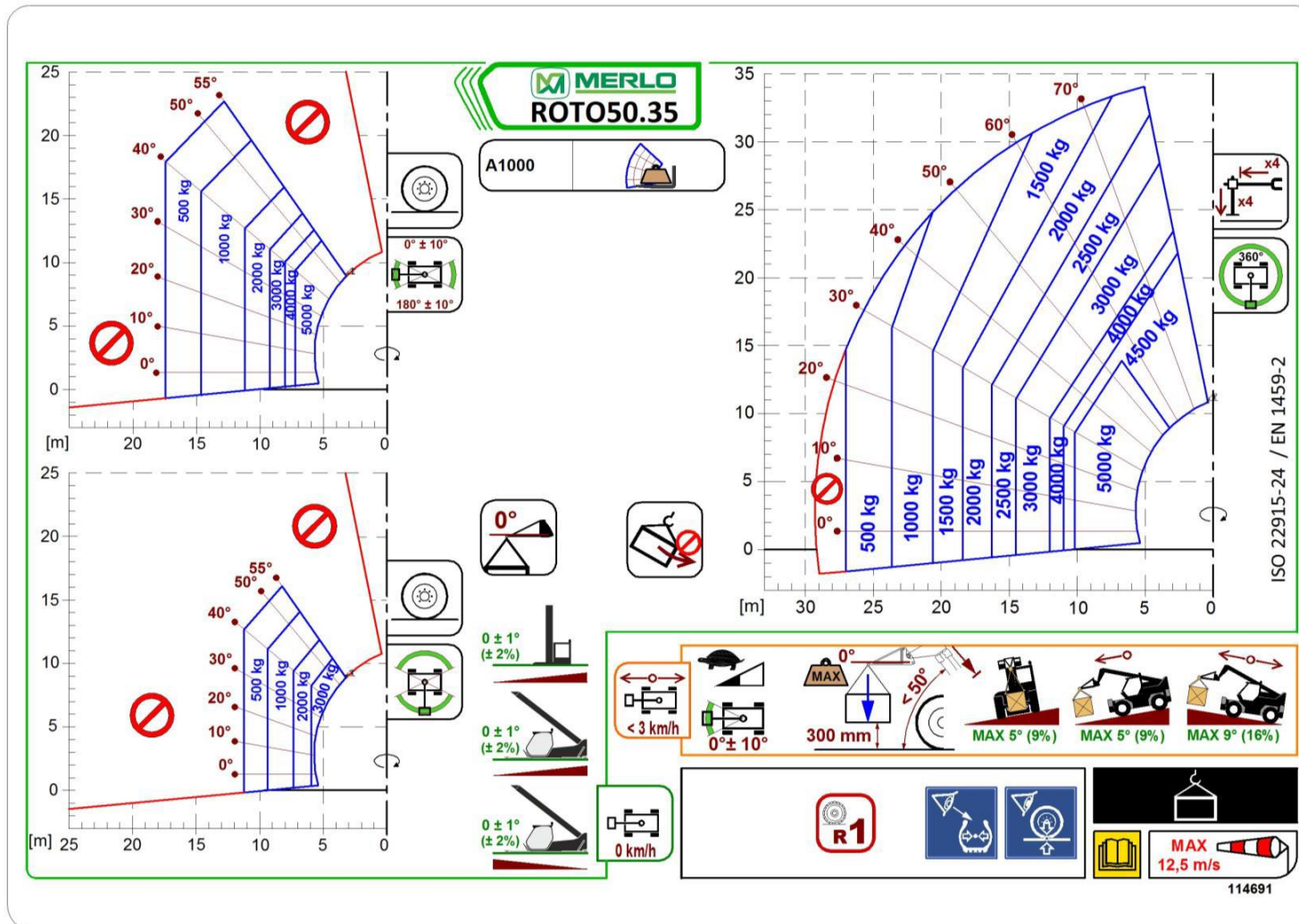
TABEL RECHTS: GESTEMPELD



KORTE HIJS-JIB

TABEL LINKS: OP BANDEN

TABEL RECHTS: GESTEMPELD

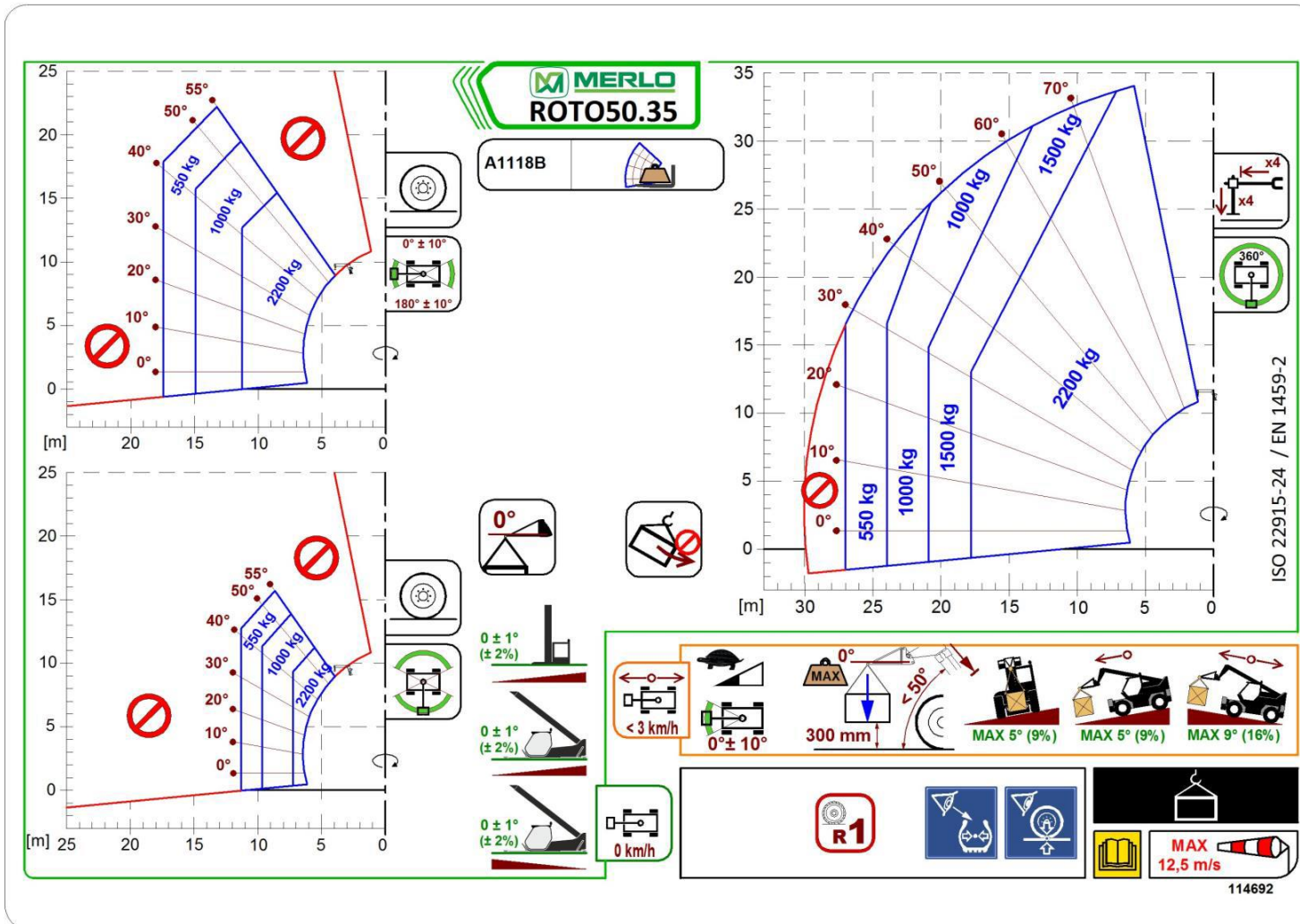




VASTE HIJS-JIB

TABEL LINKS: OP BANDEN

TABEL RECHTS: GESTEMPELD

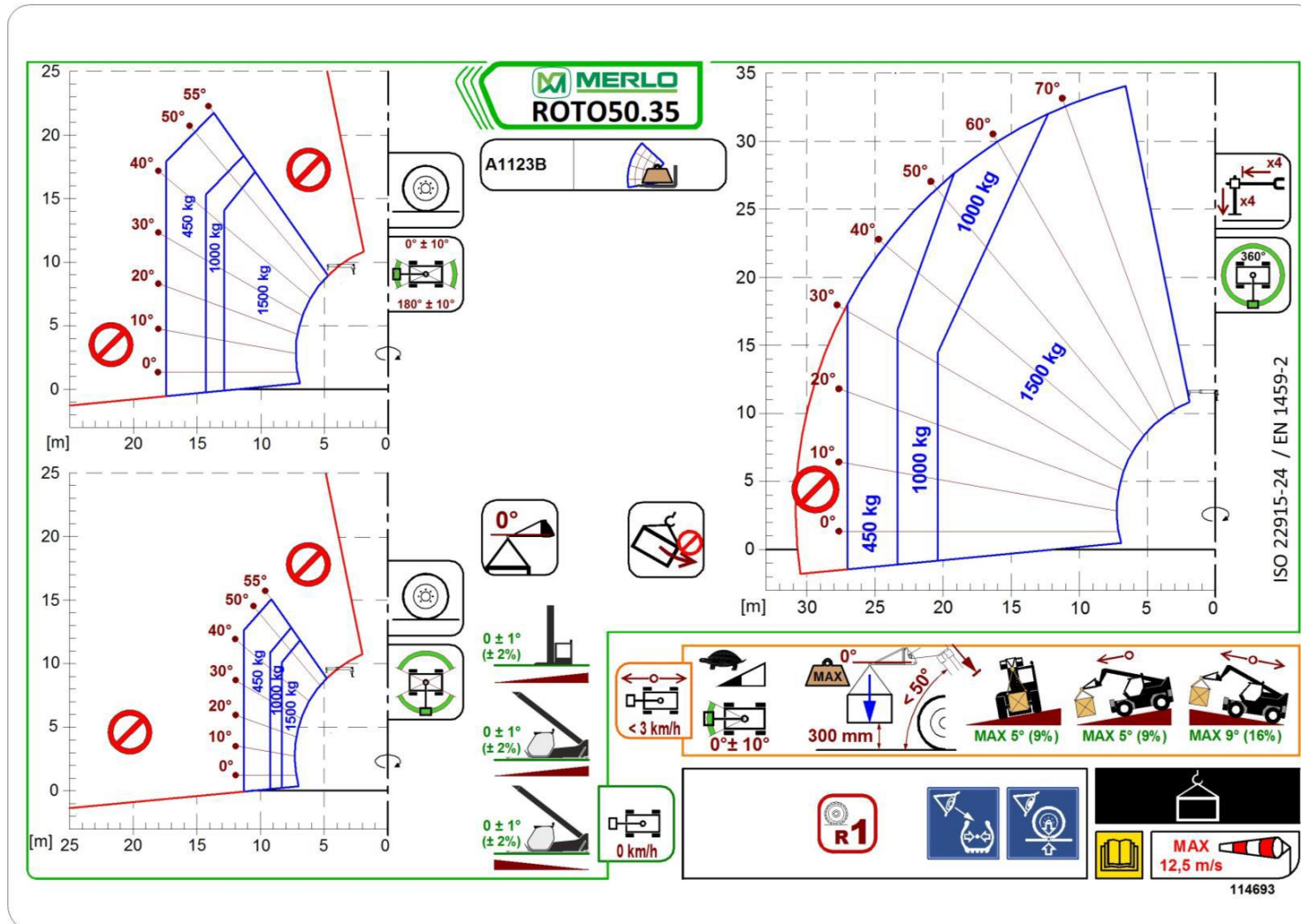




UITSCHUIFBARE HIJS-JIB

TABEL LINKS: OP BANDEN

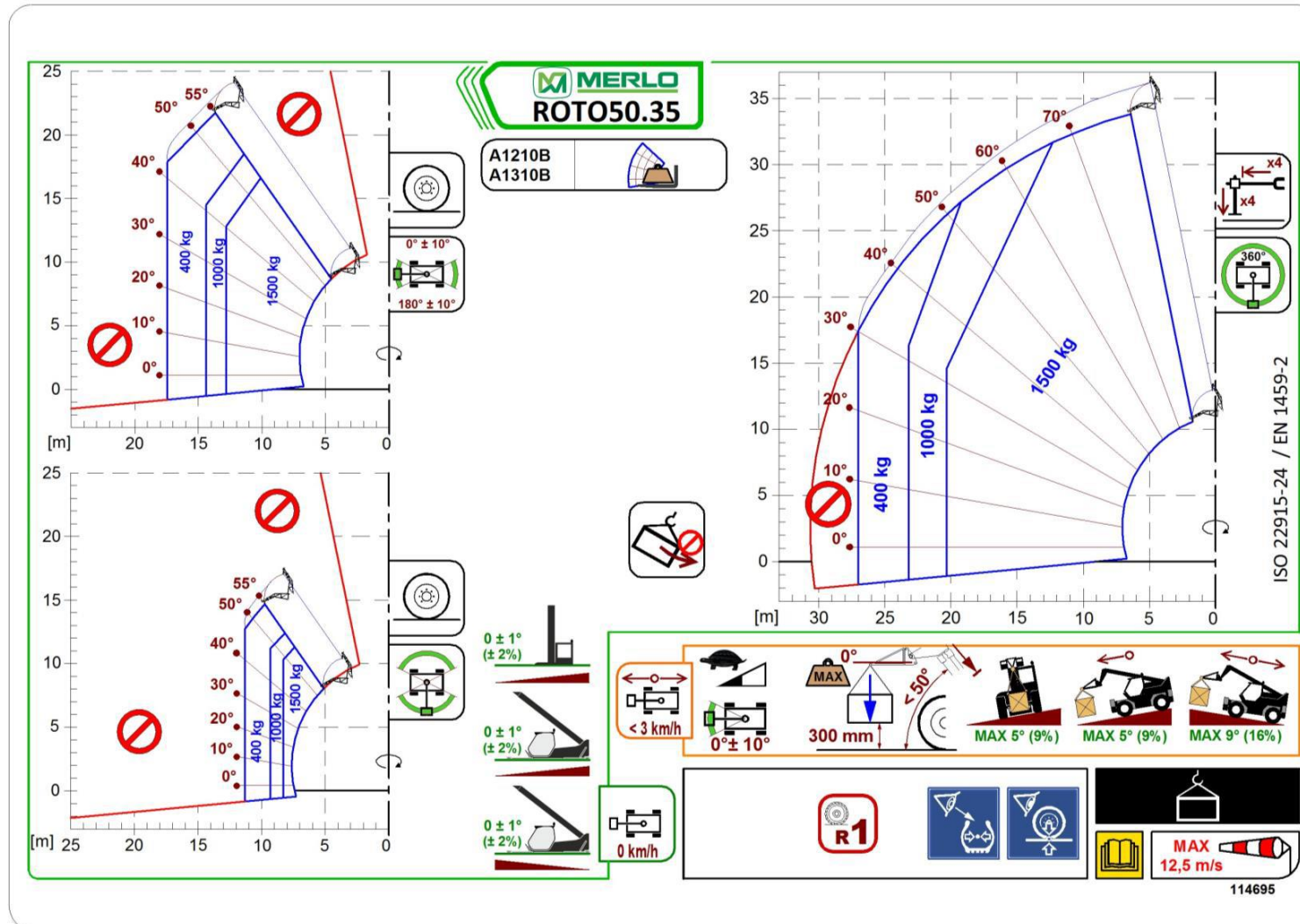
TABEL RECHTS: GESTEMPELD



JIB-LIER 1500 KG

TABEL LINKS: OP BANDEN

TABEL RECHTS: GESTEMPELD

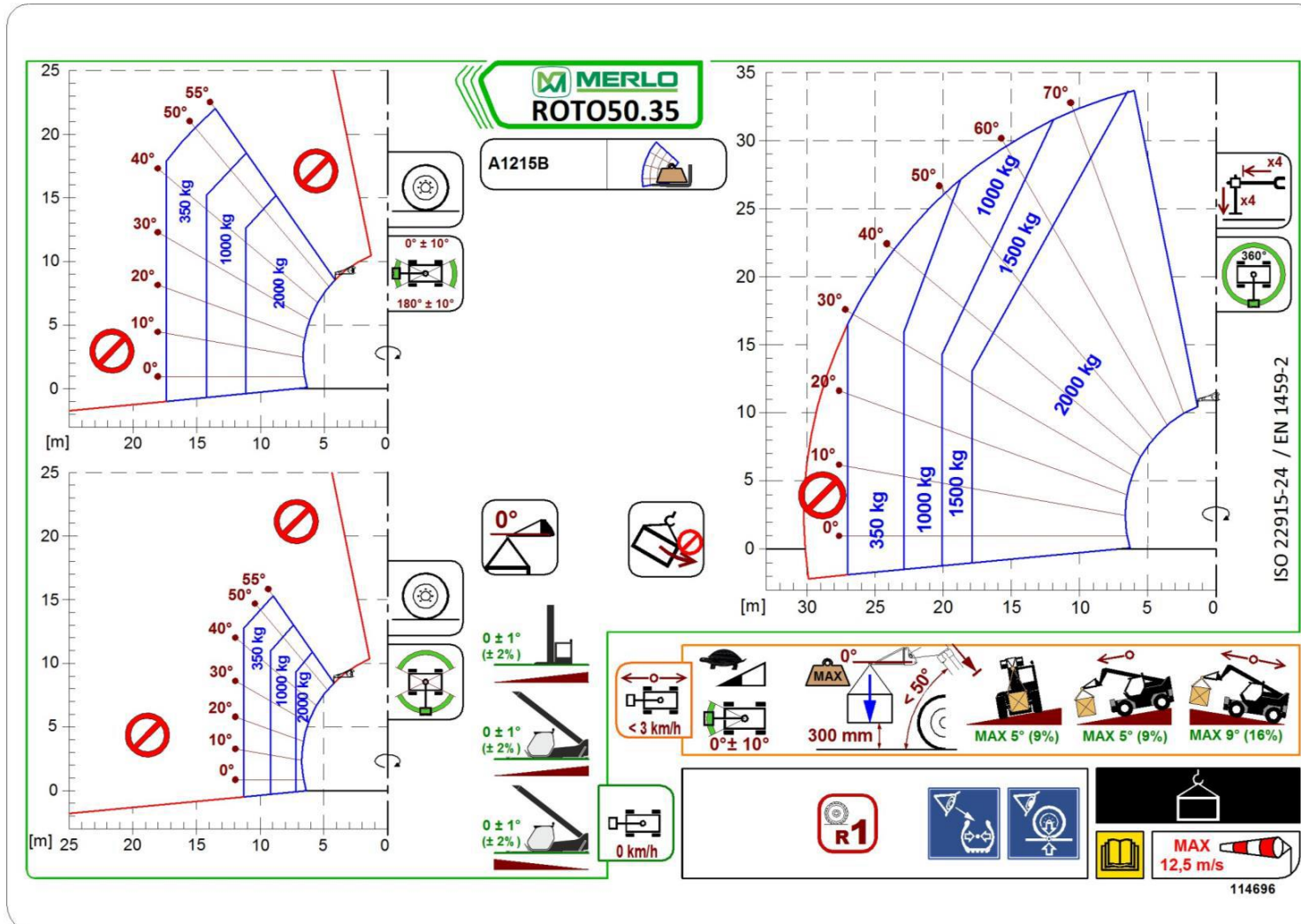




JIB-LIER 2000 KG

TABEL LINKS: OP BANDEN

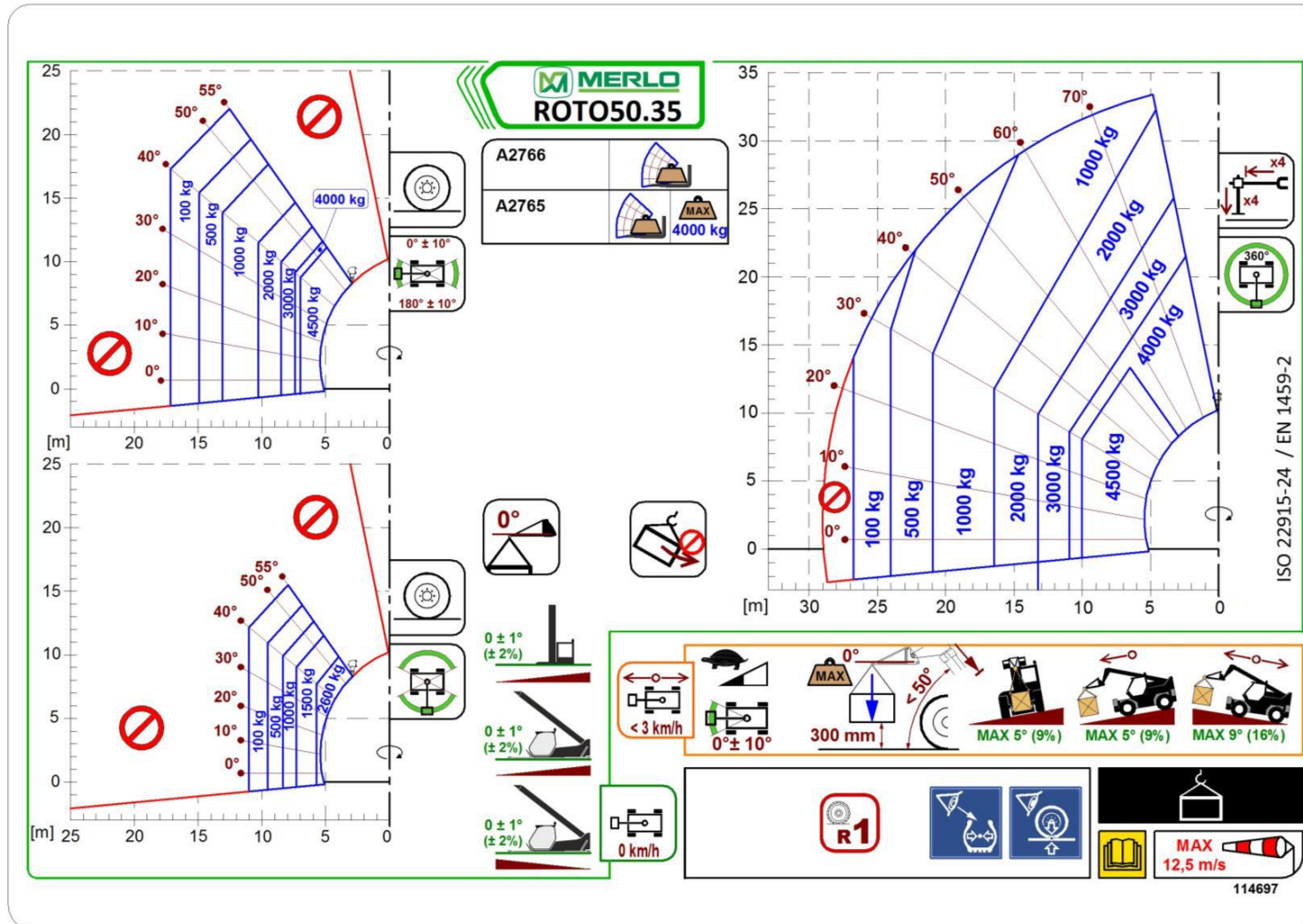
TABEL RECHTS: GESTEMPELD



BLOKLIER 4000 KG

TABEL LINKS: OP BANDEN

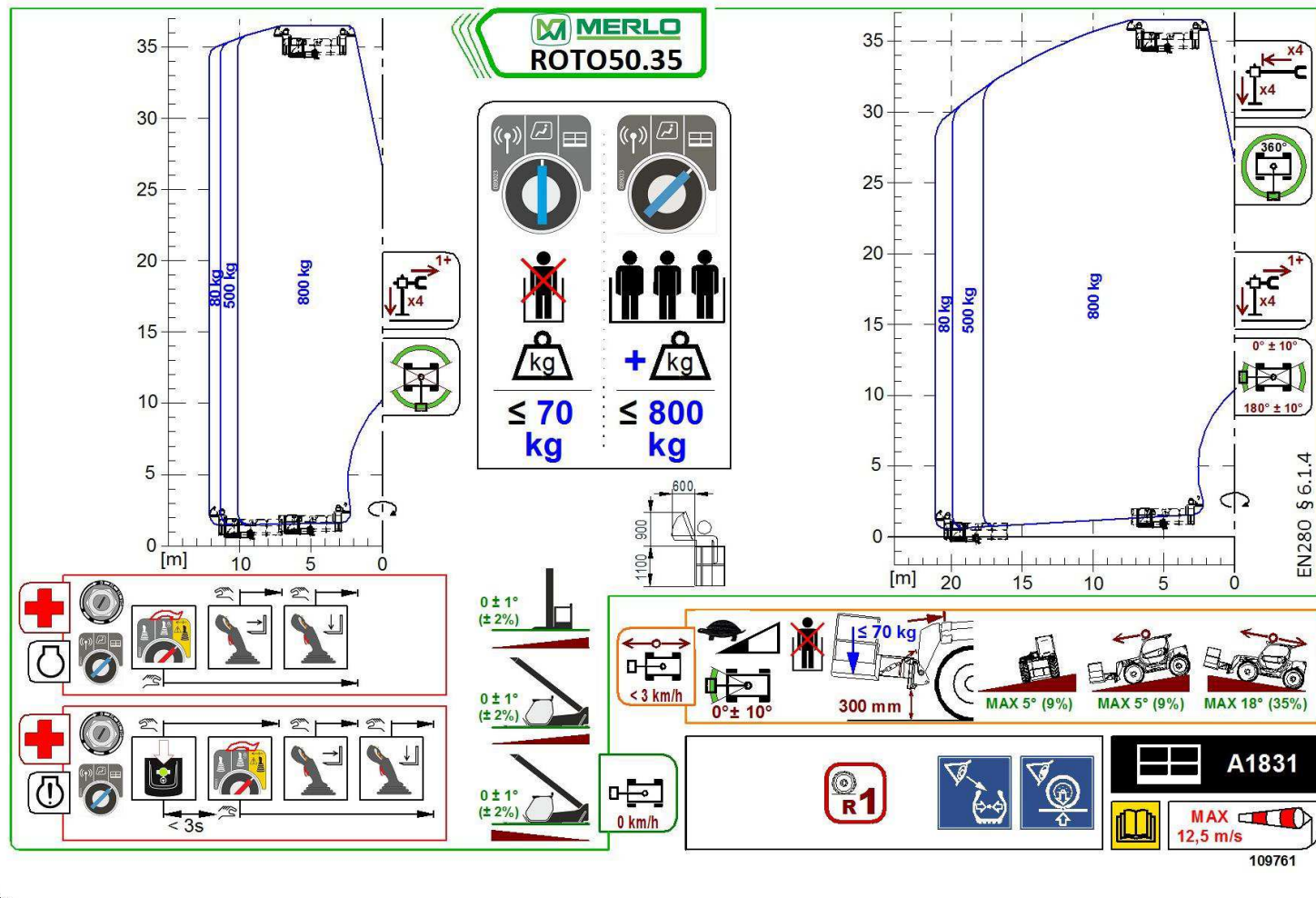
TABEL RECHTS: GESTEMPELD



WERKPLATFORM 800 KG

TABEL LINKS: MACHINIST IN CABINE

TABEL RECHTS: MACHINIST IN WERKPLATFORM



WERKPLATFORM 1000 KG

TABEL LINKS: MACHINIST IN CABINE

TABEL RECHTS: MACHINIST IN WERKPLATFORM

